



KEEP REENGINEERING, KEEP INNOVATING



LIVESTOCK PREFABRICATED HOUSES

PREFAB STEEL STRUCTURES

Agricultural House Structure Multi-Functions

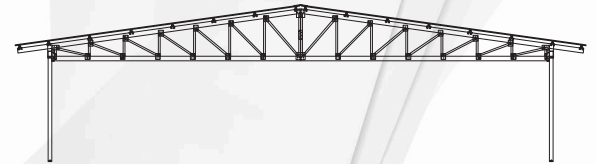
PREFABRICATED STEEL STRUCTURE

Our engineering team specializes in designing efficient and long-lasting metal structures. With their field expertise, they fully comprehend the significance of a well-designed poultry house that excels in every aspect.

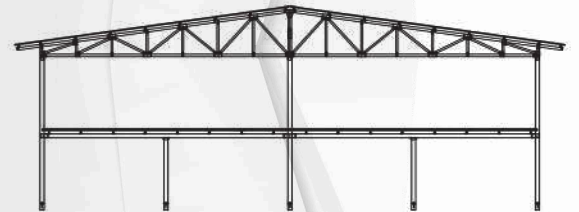
They work out precise and direct building construction plans to streamline the construction process, ensuring a smooth and efficient completion.



STRUCTURE MAIN FRAME PROFILE



Drop Ceiling



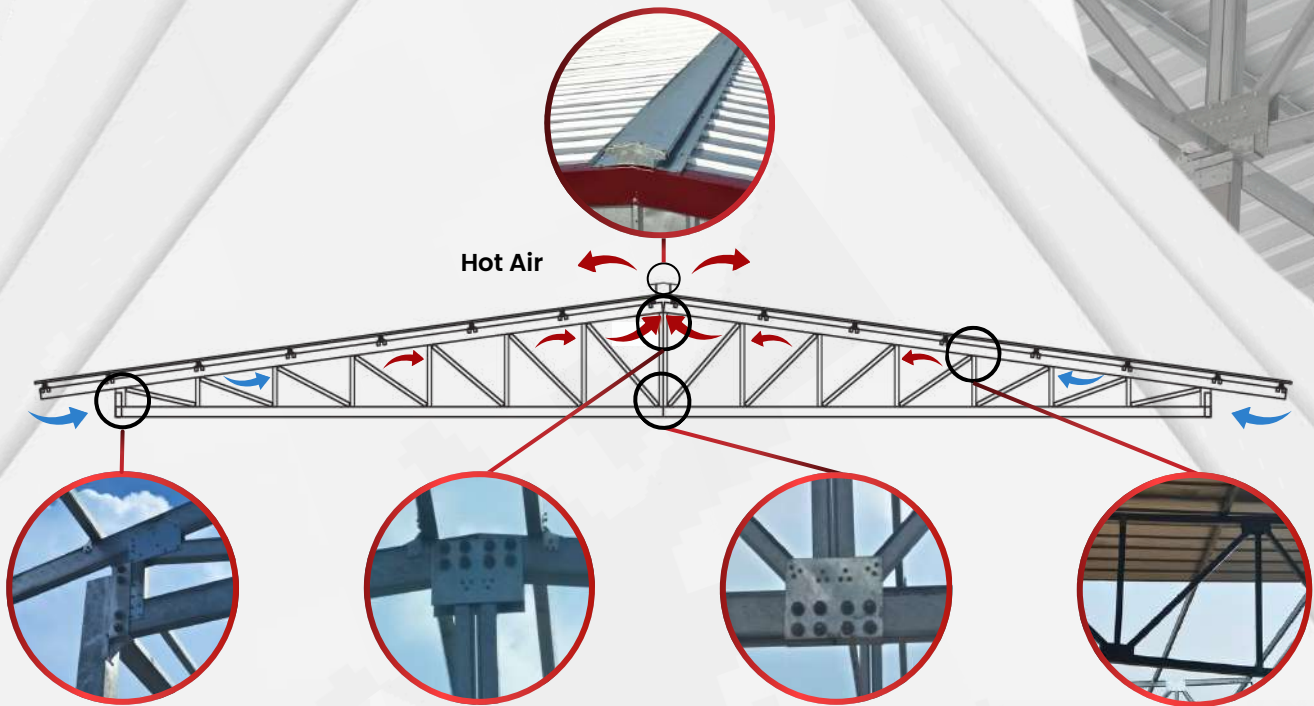
Double Storey



Drop Ceiling with Internal Column

DROP CEILING SYSTEM

Designed to provide optimal cooling and air circulation in poultry houses well-circulated and cool for a comfortable and healthy environment.



Advantage

- Easy & fast installation.
- Lightweight & durable.
- Only bolt & nut and tap screw.

CONNECTION TYPE



CLADDING TYPE



Aluzinc

PPGI

Single Storey Design Building



Pad Cooling System



Side View



Rear View

Double Storey Design Building



Pad Cooling System



Sidewall View



Rear View

Pristine Glory Sdn. Bhd.
Poultry Equipment Manufacturer
(Co. No.: 353246-W)

PT8638, Jalan Johan 2/6, Kawasan
Perindustrian Pengkalan, Fasa 2, 31550 Pusing,
Perak Darul Ridzuan, Malaysia

+605 366 6988 | +605 366 6988
+605 363 3299 | pristine@pristine.com.my

SCAN
FOR MORE ENQUIRY

